

NAGOYA 名古屋

3 Days 2 nights Hotel Package

Ex HKG valid for travel Between 05May-31DEC20

Issued on 05May20 (Supersede Issued on 07Apr20)



GV2 " N " Class
Please refer to the last page for airfare surcharge

(Min. 2 Adults)

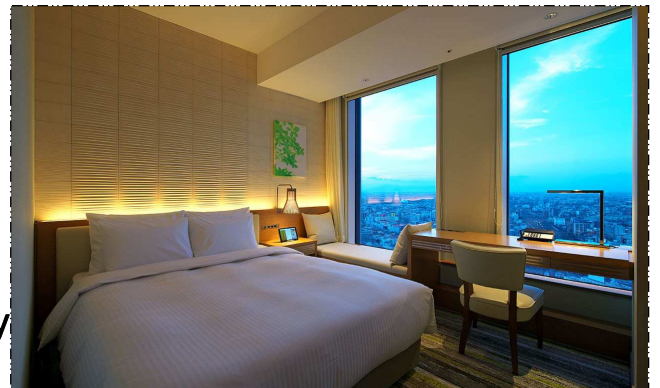
Nagoya JR Gate Tower Hotel

<https://www.associa.com/>

Adult sharing Twin:
HKD5390 up

Room Category: Moderate Room (Room only)

Extension Night: HKD1230 up



Nagoya Prince Hotel Sky Tower

<https://www.princehotels.co.jp>

Adult sharing Twin:
HKD5490 up

Room Category: Sky King Room (Room only)

Extension Night: HKD1290 up



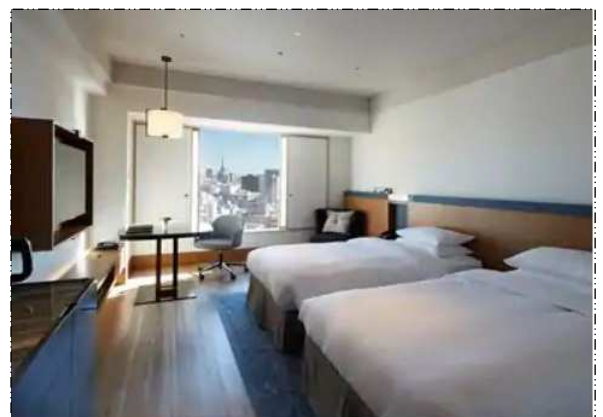
Hilton Nagoya

<https://hiltonhotels.jp/>

Adult sharing Twin:
HKD5550 up

Room Category: Guest Room (Room only)

Extension Night: HKD1340 up



NAGOYA 名古屋

3 Days 2 nights Hotel Package

Ex HKG valid for travel Between 05May-31DEC20

Issued on 05May20 (Supersede Issued on 07Apr20)



GV2 " N " Class
Please refer to the last page for airfare surcharge

(Min. 2 Adults)

Price per pax in HKD / Extra nights in HKD per room

Hotel Property 酒店	Cat. 級數	B'fast 早餐	Adult Half Semi DBL 成人佔半房 (雙人床)	Adult Half Twin 成人佔半房	Adult Single 成人單人房	Adult Triple 成人三人房	Extension Night Semi DBL / Single / Twin / Triple 延期住宿每房每晚	Remark 備注
The Strings Hotel Nagoya	4	✕	N/A	5050 up	5490 up	5290 up	N/A/ 700/ 850/ 1510 up	www.strings-hotel.jp
Daiwa Roynet Hotel Nagoya Taiko dori Side	3	✕	(Double) 5150 up	5390 up	5190 up	N/A	950/ 570/ 1190/ N/A up	https://www.daiwaroynet.jp
Mitsui Garden Hotel Nagoya Premier	4	✕	5150 up	5650 up	6050 up	5550 up	930/ 980/ 1450/ 1960 up	www.gardenhotels.co.jp
Mercure Nagoya Cypress	4	✕	N/A	5250 up	5750 up	5490 up	N/A/ 850/ 1050/ 1840 up	www.thecypress.co.jp
Marriott Associa	5	✕	N/A	6350 up	7290 up	N/A	N/A/ 1600/ 2120/ N/A up	www.associa.com

(Triple Room: 3 Adults = ADT TRP x 3 pax OR 2 Adults + 1 Child = ADT TRP x 2 + CHD TRP x 1)

Departure Date	Surcharge Amount	Class
05May-09Jul, 21Aug-18Dec, 29-31Dec	No	N
05May-09Jul, 21Aug-20Dec, 27-31Dec	Adult: HKD500, Child: HKD380	S
05May-20Dec, 27-31Dec	Adult: HKD1430, Child: HKD1080	V
05May-20Dec, 27-31Dec	Adult: HKD2430, Child: HKD1830	L
05May-31Dec	Adult: HKD3640, Child: HKD2730	M
	Adult: HKD4790, Child: HKD3600	K
Premium Economy Class		
05May-23Jun, 28Jun-09Jul, 21Aug-29Sep, 03-22Oct, 25Oct-20Dec, 27-31Dec	Adult: HKD3250, Child: HKD2440	E (Premium Economy Class available on selected CX flights only)
24-27Jun, 10Jul-20Aug, 30Sep-02Oct, 23-24Oct	Adult: HKD4180, Child: HKD3140	
21-26Dec	Adult: HKD6690, Child: HKD5020	
Business Class		
05May-09Jul, 21Aug-20Dec, 27-31Dec	Adult: HKD7770, Child: HKD5830	D
10Jul-20Aug, 21-26Dec	Adult: HKD12270, Child: HKD9210	

Prices are inclusive of:

- > Roundtrip economy air ticket from Hong Kong to Nagoya by Cathay Pacific Airways
- > 2 nights hotel accommodation at your choice
- > Room only
- > Child half Twin or Extra bed – Adult Rate less HKD1010
- > Child no bed without breakfast: HKD3350 per person

Remarks:

- > Booking Class: " N " Class
- > Ticket Validity: 2 - 7 Days
- > Package prices are subject to the Hong Kong Passenger Security Charge, taxes and other surcharges.
- > Valid on Flight Date Shown Only
- > Min. 2 Adults must travel together on both inbound & outbound flight and check in together
- > Booking must be under One PNR and "CX GV2 Fare IN (Date) OUT (Date) at XXX Hotel" must be input in OSI field
- > NON-Refundable for all No Show Booking
- > All prices & conditions are subject to change without prior notice
- > All taxes and fuel surcharges are not included