

Okinawa 沖繩

3 Days 2 nights Hotel Package

Ex HKG valid for travel Between 05May-31Dec20

Issued on 05May20 (Supersede Issued on 07Apr20)



| Booking Class | Applicable Flights |
|---|-----------------------------------|
| N | Valid on CX/KA operating Flights. |
| Please refer to the last page for airfare surcharge | |

(Min. 2 Adults)

Naha City

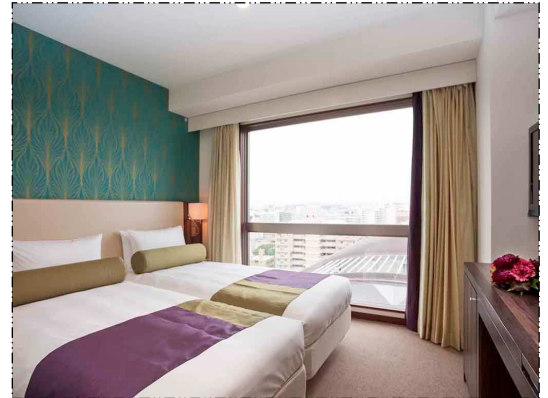
Mercure Okinawa Naha

www.mercureokinawanaha.jp

Adult sharing Twin: HKD4050 up

Room Category: Standard (Room only)

Extension Night: HKD760 up



Resort Area

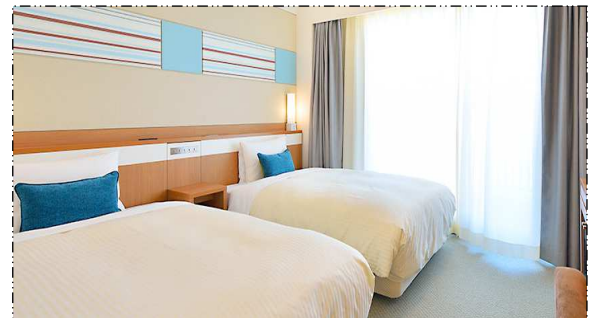
Vessel Hotel Campana Okinawa

<https://www.vessel-hotel.jp>

Adult sharing Twin: HKD4390 up

Room Category: Annex tower twin

Extension Night: HKD1100 up



Resort Area

Hilton Okinawa Chatan Resort

<https://www3.hilton.com>

Adult sharing Twin: HKD5150 up

Room Category: Guest Room

Extension Night: HKD1800 up



Okinawa 沖繩

3 Days 2 nights Hotel Package

Ex HKG valid for travel Between 05May-31Dec20

Issued on 05May20 (Supersede Issued on 07Apr20)



| Booking Class | Applicable Flights |
|---|-----------------------------------|
| N | Valid on CX/KA operating Flights. |
| Please refer to the last page for airfare surcharge | |

(Min. 2 Adults)



| Hotel Property 酒店 | Cat. 級數 | B'fast 早餐 | Adult Half Semi DBL 成人佔半房 (雙入床) | Adult Half Twin 成人佔半房 | Adult Single 成人單人房 | Adult Triple 成人三人房 | Extension Night Semi DBL / Single / Twin / Triple 延期住宿每房每晚 | Remark 備注 |
|---|------------|--------------|--|-----------------------------|--------------------------|--------------------------|--|--|
| Naha City | | | | | | | | |
| Rihga Royal Gran Okinawa | 4 | ✖ | N/A | 4550 up | 5650 up | 4750 up | N/A/ 1220/ 1220/ 2060 up | www.rihgaroyalgran-okinawa.co.jp |
| DoubleTree by Hilton Hotel Naha | 4 | ✖ | N/A | 4550 up | 5550 up | 4350 up | N/A/ 1190/ 1260/ 1480 up | doubletree3.hilton.com |
| JR Kyushu Hotel Blossom Naha | 3 | ✖ | N/A | 4850 up | 5390 up | 4750 up | N/A/ 1100/ 1540/ 2010 up | www.jrk-hotels.co.jp |
| Hyatt Regency Naha Okinawa | 5 | ✓ | N/A | 5050 up | 6590 up | 4790 up | N/A/ 1700/ 1700/ 2130 up | https://www.hyatt.com |
| Resort Area | | | | | | | | |
| ANA Intercontinental Manza Beach Resort | 5 | ✓ | N/A | 4750 up | 5890 up | 4950 up | N/A/ 1350/ 1430/ 2340 up | www.anaintercontinental-manza.jp/ |
| Hotel Nikko Alivila | 4 | ✓ | N/A | 4950 up | 6250 up | 4590 up | N/A/ 1520/ 1640/ 1830 up | https://www.alivila.co.jp/ |
| Sheraton Okinawa Sunmarina Resort | 4 | ✓ | N/A | 4990 up | 6290 up | N/A | N/A/ 1550/ 1690/ N/A up | https://sheraton-okinawa.co.jp |
| Kafuu Resort Fuchaku Condo | 5 | ✓ | N/A | 4990 up | 6350 up | 4650 up | N/A/ 1580/ 1650/ 1900 up | www.kafuu-okinawa.jp |

| Departure Date | Surcharge Amount | Class | Remarks |
|------------------------------------|------------------------------|-----------------------------|-----------------------------------|
| 05May-09Jul, 21Aug-18Dec, 29-31Dec | No | N | Valid on CX/KA operating Flights. |
| | HKD400/Adult, HKD300/Child | S | |
| 05May-09Jul, 21Aug-20Dec, 27-31Dec | HKD820/Adult, HKD620/Child | V | |
| | 05May-20Dec, 27-31Dec | HKD1230/Adult, HKD930/Child | |
| 05May-20Dec, 27-31Dec | HKD1830/Adult, HKD1380/Child | M | |
| | HKD2540/Adult, HKD1910/Child | K | |
| | HKD3130/Adult, HKD2350/Child | H | |
| 05May-31Dec | HKD3530/Adult, HKD2650/Child | B | |
| | Business Class | | |
| 05May-09Jul, 21Aug-20Dec, 27-31Dec | HKD4150/Adult, HKD3120/Child | D | |
| | 10Jul-20Aug, 21-26Dec | | HKD6150/Adult, HKD4620/Child |

| Prices are inclusive of: | Remarks: |
|---|--|
| <ul style="list-style-type: none"> ➢ Roundtrip economy air ticket from Hong Kong to Okinawa by Cathay Pacific Airways / Cathay Dragon ➢ 2 nights hotel accommodation at your choice ➢ Daily Breakfast (See above details) ➢ Child half Twin or Extra bed – Adult Rate less HKD790 ➢ Child no bed without breakfast: HKD2690 per person | <ul style="list-style-type: none"> ➢ Booking Class: " N " Class ➢ Ticket Validity: 2 - 7 Days ➢ Package prices are subject to the Hong Kong Passenger Security Charge, taxes and other surcharges. ➢ Valid on Flight Date Shown Only ➢ Min. 2 Adults must travel together on both inbound & outbound flight and check in together ➢ Booking must be under One PNR and "CX GV2 Fare IN (Date) OUT (Date) at XXX Hotel" must be input in OSI field ➢ NON-Refundable for all No Show Booking ➢ All prices & conditions are subject to change without prior notice ➢ All taxes and fuel surcharges are not included |